

JAY®

COMPLEMENT YOUR QUICKIE

Order your Jay® Cushion and Jay® J3 Back shipped complete on-chair with any Quickie 2/2 Lite chair. Just check the boxes on the order form and save time and money!



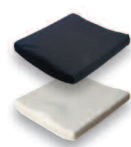
Quickie 2 Family



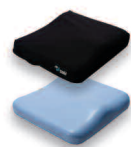
Over the past 8 years, JAY engineers have commissioned 5 major scientific studies and actively work with a number of top researchers in the academic community. Our products may look simple in nature, but they are a synthesis of ideas from the best minds in the world.

Here at JAY, we embrace the Science of Seating.

Jay Cushions



Basic
E2601
E2602



Soft Combi P
E2605
E2606



Easy
E2607
E2608



Lite
E2603
E2604
E2607
E2608



J2
K0734
K0735
K0736
K0737



J2 DC
K0734
K0735
K0736
K0737

Jay Backs



J3 Posterior
E2613



J3 Posterior & Lateral
E2615



J3 Posterior & Deep Lateral
E2620



Versatile, modular, and lightweight folding wheelchairs with features to fit your life!



Quickie 2 Family Specifications

SPECIFICATIONS	QUICKIE 2 LITE	QUICKIE 2
Frame Style	Folding – Open	Folding – Traditional
Transport Weight	17.1 lbs. (Fixed-front) 19.46 lbs. (Swing-away)	17.6 lbs.
Overall Weight	25.5 lbs. (Fixed-front) 27.75 lbs. (Swing-away)	29.0 lbs.
User Weight Capacity	265 lbs.	265 lbs. (Standard) 350 lbs. (Heavy-duty)
Seat Widths	14" - 20"	12" - 22"
Seat Depth	14" - 20"	12" - 22"
Back Angle Adjustment	-14° - 5°	-15° - 3°
Front Seat To Floor Height	14.5" - 21"	15" - 21"
Rear Seat to Floor Height	13" - 19.5"	13.5" - 19"
Frame Angle	70°, 80°	N/A
WARRANTY		
Warranty	Limited/Lifetime	Limited Lifetime



Customer Service: 800.333.4000

For additional product specifications please visit:
www.sunrisemedical.com

©Sunrise Medical, Inc. 02.09
111904 Rev. A



improving people's lives

You drive our design. In development, we consider how you interact with the chair and how both can work as one to maintain maximum efficiency, performance, style and fit. Before you receive the chair, the product undergoes rigorous testing in addition to the required testing necessary for federal guidelines. Through our focus on these core elements: design, development and testing; we design these chairs for you and by you.

QUICKIE® 2 Lite

QUICKIE 2 Fit

Modular Design

- Simplified, interchangeable components and frames

Q-Fit™ Technology:

- Rigidity and performance for the life of the product
- Reduced noise in armrests and side guards providing a notably quieter ride

Quickie's True Fit Program

If the need arises to significantly modify the chair, the True Fit program provides free parts within 5 years of original chair ownership.

A lightweight, simple package that offers an ideal option mix for our active users

- Simplified option mix
- Ultra Lightweight: 27.75 lbs overall - **Fully loaded!**
- Fixed front frame option
- Smooth, contoured and natural style



QUICKIE® 2

The industry's favorite folding chair for over 25 years.

Now with new innovations!

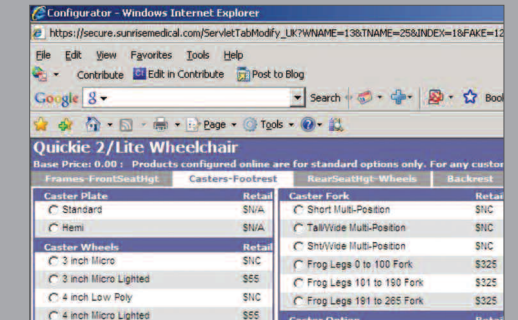
- New lightweight technologies with expanded options
- Over 64,000 possible rehab configurations
- Heavy duty frame option
- Depth adjustable backrest



New Kolorfusion™ Colors



Online Configurator



QUICKIE 2 Appeal

New Options

- NEW! Lite spoke wheel (No charge)
- NEW! Swing-in, swing-out hangers
- Front caster suspension
- Expanded rear wheel portfolio
- Expanded caster wheel and hub offerings

Color Options

- 20 standard paint colors
- 8 Kolorfusion™ color options including the NEW Spot Fires and NEW Catch-A-Wave

QUICKIE 2 Convenience

Easy to Order

- Online Configurator that follows the order form
- Bundle with JAY® cushions and J3 backs. It ships complete!

Easy Adjustments

- Major components were designed to minimize adjustment and set-up time

Transit Option

- Tested in accordance with WC19